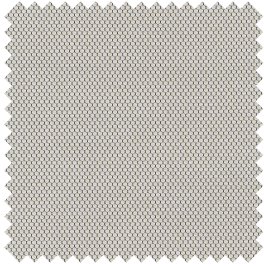
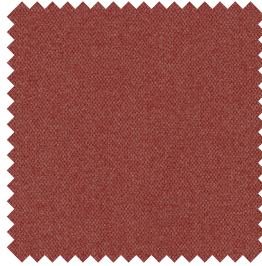


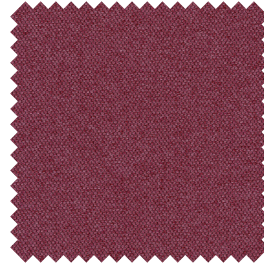
PRIME COLLECTION  
PEARL



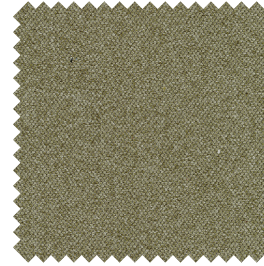
00A9



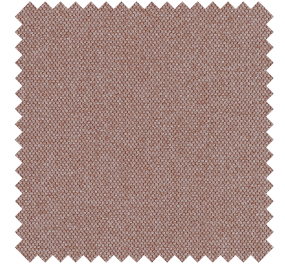
00AF



00B6



00CF



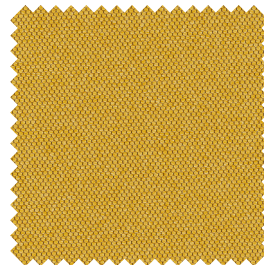
00D7



00G1



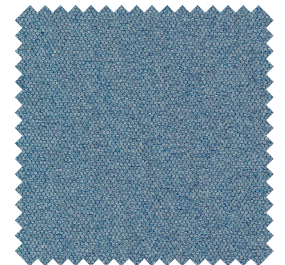
00G3



00J2



00L4



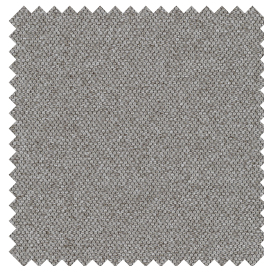
00M4



00N2



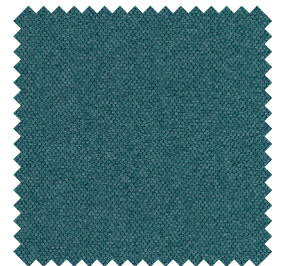
00N8



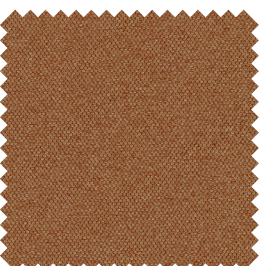
00N9



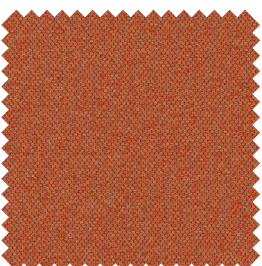
00Q6



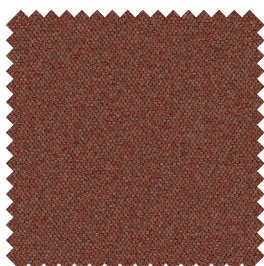
00R9



00S6



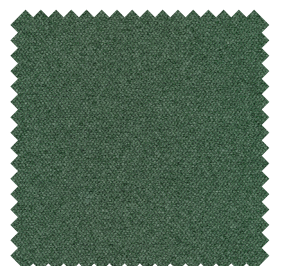
00T1



00T7



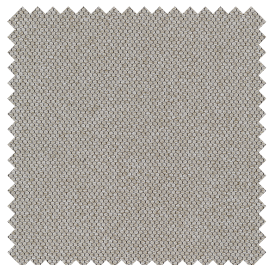
00V8



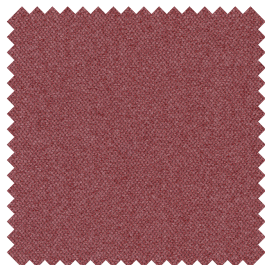
00X7



PRIME COLLECTION  
PEARL



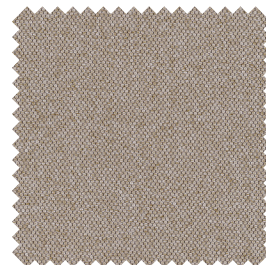
0003



0013



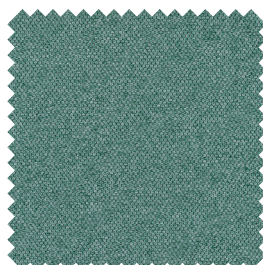
0030



0037



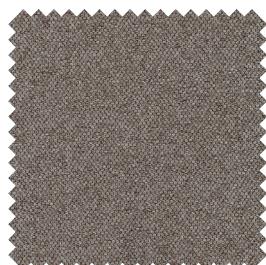
0048



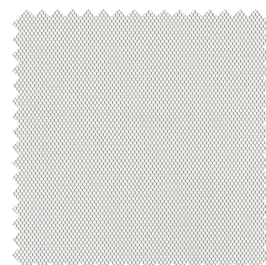
0051



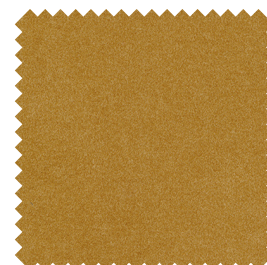
0069



0073



0074



0095



# HUISLIJN

## PRIME COLLECTION PEARL

GENERAL FABRIC INFORMATION					
Quality Name	PRIME-A	Design Name	PRIME PEARL		
End-Use	UPHOLSTERY FABRICS	Width (+2cm)	140 cm (55")	Weight	485 gr/m <sup>2</sup>
Composition	%100 PES	Specials			

PHYSICAL TESTS					
Test	Standarts	Results			
Abrasion End	EN ISO 12947-2	60000			
Wyzenbeek	ASTM D4157	20000			
Martindale-Pilling 2.000 Cycle	EN ISO 12945-2	4/5			
Brush Pilling	D3511-99A				
Test	Standarts	Warp	Weft		
Seam Slippage	EN ISO 13936-2	1.8	1.7		
Tear Strength	EN ISO 13937-3	55	80		
Tensile Strength	EN ISO 13934-1	730	650		
Colour Fastness Rubbing	EN ISO 105-X12(Dry/Wet)	4/5	4/5		
Colour Fastness Light	EN ISO 105-B04				

FLAMMABILITY TESTS		
Test	Standarts	Results
Cigarette Test	BS 5852 PART 1 SOURCE 0	PASS
Match Test	BS 5852 PART 1 SOURCE 1	PASS
Cigarette Test	EN 1021-1	PASS
Match Test	EN 1021-2	PASS
Cigarette-Match Test	IMO PART 8	PASS
Cigarette-Match Test	BS 7176 LOW HAZARD	PASS
Cigarette Test	CALL 117	PASS
Cigarette Test	NFPA 260	PASS

REPELLENCY / CLEANABILITY TESTS		
Test	Standarts	Results
Bleach Cleanable Test	AATCC 101-ACT TM1 With Extra Process	PASS

CARE CODES			
Washable	Wash 30°C gentle cycle	Care symbols	
Iron	Low iron at max 110°C		
Tumble dry	Do not tumble dry		
Bleach	Do not bleach		
Dry clean P	Dry-cleaning in perchloroethylene gentle cycle		

Our products fulfil the requirements of Annex XVII of REACH (incl. the use of azo-dyes, heavy metals, etc.) as well as the American requirement regarding total content of lead in children's articles)  
 In stain repellent products, we always use human and environmental friendly C6 fluorocarbons. In FR treatment, we always use DecaBDE free FR compounds.  
 The colours in production might slightly vary from this reference due to different lots in production.



SUSTAINABLE TEXTILES